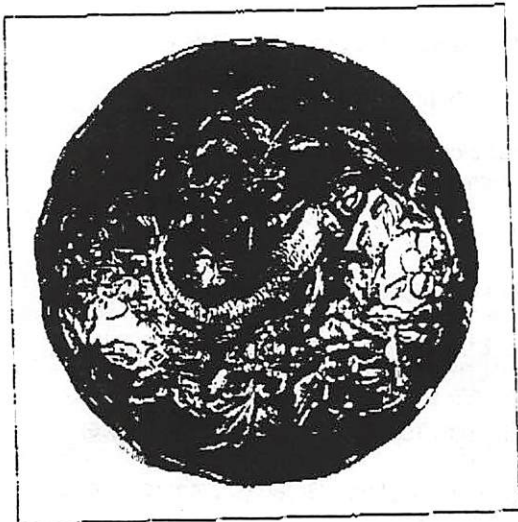


Lot #155A



Lot #182

BURNS

AUCTION SERVICE

The Mid Atlantic Carnival Glass Jamboree

Friday & Saturday,
October 18 & 19, 1996

Friday: Auction 7:00 pm, preview 5:00 pm

Saturday: Auction 10:00 am, preview 8:00 am

at the

Best Western-Venice Inn

431 Dual Highway (US Rte. 40)
Hagerstown, MD 21740

(800) 2-VENICE

(301) 733-0830



Candlesticks - Lot #176 & Spittoon - Lot #175



Lot #25

One thing you can count on - when the weather starts cooling down and it's a bit damp and the days get shorter - it's time for the annual Mid Atlantic Carnival Glass Jamboree! On the schedule this year will be the auction, featuring the collection of Mr. & Mrs. Joe Benner from Pennsylvania. They have a diversified collection with something for everyone: nice color and very little damage. There are also a few additional consignments added to spice it up, making for a nice, quality auction.

The Best Western - Venice Inn of Hagerstown, MD will host the event. The motel is located on US Highway 40 on the east side of town - easily found off I-81 or I-70. For reservations you may call the motel direct at 1-800-2-VENICE or call Nancy Williams at (610) 374-9033. Be sure to mention the convention. We hope to see you there - it's always a full house with plenty to do.

Mail, FAX or Phone bids due by Thursday, October 17, 1996.

SPECIAL NOTE: Since Tom's on the road so much, **THE BEST** thing for you is to **FAX** your bids to Bill or Carole Richards at (330) 757-4917. Take care and see ya later!

Burns Auction Service

Tom Burns
109 E. Steuben St.
Bath, New York 14810
(607) 776-7942

Bill Richards
44 Water St., Poland, OH 44514
(330) 757-2001
FAX (330) 757-4917

Bill Richards, III
524 Poland Ave,
Struthers, Ohio 44471
(330) 755-2620

Mail Bids honored under the following conditions:

1. No deposit required. Bidders will take full responsibility to honor any and all bids we execute for them. Payment in full plus postage and handling required after notification and before we ship any item to them.
2. Items are bid on in perfect condition with average or above average iridescence OR as listed in the brochures. Bids will not be carried out when damage on an item has been found during the auction.
3. Successful bidders will be notified by collect call from the auctioneer (so be sure to include phone number).
4. Phone inquiries about the glass or any other questions are welcome.
5. All non-successful bidders will receive a result summary in the mail. Results of all mail bids will be provided.
6. If you have some other person at the auction bidding for you, they must pay for the item before taking it.
7. Mail, FAX and Phone bids due by Thursday, October 17, 1996.

- | | | | |
|----------------|---|----------------------------|--|
| <u>35</u> 1. | Westmoreland Shell and Jewel Covered Sugar and Creamer - Mari. | <u>30</u> 14. | 9 3/4" Dugan Big Basketweave Swung Vase - Mari. (scarce pattern) |
| <u>45</u> 2. | Imperial Grape Stemmed Ruffled Compote - Lime / Helios Green (nice example) | <u>750</u> 15. | N SINGING BIRDS 7 PC. WATER SET - GREEN (GREAT COLOR AND IRID. ON A VERY WELL MATCHED SET; REALLY ATTRACTIVE) |
| <u>10</u> 3. | Fenton Orange Tree Stemmed Goblet - Dk. Mari. (beautiful example) | <u>2x40</u> 16. | (2) N Singing Bird Tumblers - Green (selling choice; has goldish irid.) |
| <u>15</u> 4. | "Be Wise" Owl Bank - Lt Mari. (scarce) | <u>4x45</u> 17. | (4) N Raspberry Tumblers - Green (scarce; really nice color; selling choice) |
| <u>525</u> 5. | N TORNADO LG. SIZE TRI-CORNERED VASE - GREEN (RARE, DESIRABLE AND PERFECT; GOLD AND MULTI-COLORED IRID.) | <u>3x40</u> 18. | (3) N Oriental Poppy Tumblers - Pur. (super bright highlights; selling choice) |
| <u>500</u> 6. | N TORNADO STANDARD SIZE TRI-CORNERED VASE - PUR. (SUPER EXAMPLE; GREAT IRID. AND PERFECT) | <u>17⁵⁰</u> 19. | Imperial Star Medallion Stemmed Goblet - Mari. |
| <u>110</u> 7. | 12 1/4" Imperial Parlor Panels Swung Vase - Lt. Amy. / Horehound (very scarce color for this item; really nice) | <u>700</u> 20. | N SPRINGTIME 7 PC. WATER SET - MARI. (VERY DESIRABLE SET WITH NICE COLOR AND IRID.) |
| <u>180</u> 8. | 12 1/2" Dugan ftd. Lined Lattice Lg. Swung Vase - Pur. (very scarce with perfect feet; a real toughie) | <u>145</u> 21. | N Springtime Covered Sugar Bowl - Dk. Mari. (super dark color with great irid.) |
| <u>55</u> 9. | 9 1/2" Dugan Lined Lattice Swung Vase - Pastel Mari. (super irid. and nice) | <u>70</u> 22. | N Springtime Creamer - Mari. (very scarce with average color and irid.) |
| <u>200</u> 10. | 17" TALL X 7" ACROSS IMPERIAL MORNING GLORY (OR PARLOR PANELS) LG. SWUNG FUNERAL VASE - SMOKE (SUPER SCARCE COLOR AND IRID.; A VERY TOUGH ITEM) | <u>95</u> 23. | N Daisy and Plume ftd. Candy Dish with Berry Interior - Pur. (scarce; nice color with perfect feet) |
| <u>160</u> 11. | 13" TALL X 8 1/2" ACROSS IMPERIAL MORNING GLORY LG. FUNERAL VASE - PUR. (SUPER, SUPER COLOR AND IRID.; SMALL CHIP ON BASE) | <u>50</u> 24. | 6 1/2" N Diamond Point Squatty Flared Vase - Green (average irid.) |
| <u>160</u> 12. | 15 3/4" Tall Imperial Ripple mid-size Swung Vase - Dk. Mari. (super color and very scarce) | <u>3000</u> 25. | N ROSE SHOW PLATE - MARI. / CUSTARD (EXTREMELY RARE AND DESIRABLE; NICE AVERAGE IRID.; SMALL CHIP ON ONE ROSE) |
| <u>65</u> 13. | 12 1/4" Imperial Ripple Swung Vase - Pur. (super, super color and irid.) | <u>1400</u> 26. | N ROSE SHOW PLATE - PUR. (SUPER, SUPER RARE WITH GREAT IRID.; PERFECT) RETURNED - |

- 1300 27. N ROSE SHOW PLATE - BLUE (RARE AND VERY DESIRABLE; ELEC. BLUE HIGHLIGHTS)
- 175 28. 8 3/4" N ROSE SHOW DEEP FLARED BOWL - WHITE (VERY SCARCE; ODD SHAPE; AVERAGE IRID.)
- 30 29. 11" N Thin Rib Standard Swung Vase - Olive Green (nice irid.)
- 350 30. N POPPY SHOW PLATE - WHITE (VERY SCARCE AND DESIRABLE; NICE PINK, GOLD AND BLUE HIGHLIGHTS) *Small chip on poppy*
- 500 31. N POPPY SHOW PLATE - MARL. (RARE AND DESIRABLE; AVERAGE IRID. WITH PINK AND BLUE HIGHLIGHTS)
- 35 32. 9" Tall N Tree Trunk Standard Swung Vase - Pur. (great color and irid.)
- 30 32A. 5 - 6" Tall N Pillar Ribbed Squatty Swung Vase - Blue (scarce item in a desirable size; may have slight roughness on one toe) *2 chipped feet*
- 75 33. 10 1/4" Tall N Tree Trunk Standard Swung Vase - Green (great color and irid.)
- 95 34. 10 1/2" Tall N Tree Trunk Standard Swung Vase - Amy. (one of the better multi-colored examples I've seen)
- 375 35. 13 1/4" Tall N Tree Trunk Mid-size Swung Vase - Amy. (very scarce with nice color and irid.)
- 90 36. Flying Bat Hatpin - Pur. (very scarce with great irid.)
- 60 37. Triplet (3 Bees) Hatpin - Pur. (really nice)
- 65 38. Cattails Hatpin - Pur. (really nice irid.)
- 50 39. Throw Pillow Hatpin - Pur. (scarce; nice)
- 300 40. N THREE FRUITS FLAT PLATE WITH PLAIN EXTERIOR - PUR. (ABSOLUTELY SUPER BRIGHT IRID. WITH BLUE HIGHLIGHTS)
- 195 41. N. Strawberry Plate with Plain Exterior - Pur. (super item; looks green - great irid.)
- 125 41A. N Strawberry Stippled Ruffled Bowl - Dk. Pur. (very scarce item with nice multi-colored irid.; has tiny, tiny flake on pattern)
- 220 42. N Strawberry Bowl with Pie Crust Edge and Plain Exterior - Green (a super item with bright blue irid. - wow!)
- 235 43. N Strawberry Flat Plate with Basketweave Exterior - Marl. (super irid.; an excellent example)
- 55 44. 9 3/4" N Stippled Rays Lg. 8 Ruffled Bowl with Plain Edge - Pur. (super example; nice)
- 1100 45. N G & C STIPPLED BOWL WITH PIE CRUST EDGE AND RIBBED EXTERIOR - ICE BLUE (A BEAUTIFUL AND VERY RARE ITEM; HAS NICE PINK AND BLUE HIGHLIGHTS)
- 275 46. N G & C FLAT PLATE WITH PLAIN EXTERIOR - PUR. (ABSOLUTELY FANTASTIC ELEC. BLUE HIGHLIGHTS - WOW!!!)
- 155 47. N G & C Plate with Basketweave Exterior - Pur. (great satiny irid. - a really nice example)
- 300 48. N G & C Variant Plate with Basketweave Exterior - Green (scarce; nice color and irid.)
- 120 49. N G & C Variant Plate with Basketweave Exterior - Marl. (nice satiny finish)
- 350 50. N G & C FTD. HATPIN HOLDER - PUR. (ABSOLUTELY SUPER BRIGHT IRID. - A REAL WINNER!)
- 300 51. N G & C FTD. HATPIN HOLDER - DK. MARL. (A REALLY NICE DARK EXAMPLE - PERFECT)
- 375 51A. N G & C PERFUME BOTTLE AND STOPPER - DK. MARL. (A REAL BEAUTY; VERY DARK; HAS SMALL FLAKE ON UNDERSIDE OF BASE)
- 145 52. N G & C Candlestick - Pur. (scarce item; nice)
- 200 53. N G & C ftd. Banana Boat - Green (very scarce color with average irid.)
- 300 54. N G & C 7 pc. Water Set - Dk. Mari. (scarce set with great color and irid.; nice!)
- 450 55. N GOOD LUCK BOWL WITH PIE CRUST EDGE AND BASKETWEAVE EXTERIOR - PUR. (VERY NICE EXAMPLE WITH MULTI-COLORED IRID.)
- 190 56. N Greek Key Low 8 Ruffled Bowl with Basketweave Exterior - Green (an excellent satiny example)
- 170 57. N Greek Key 8 Ruffled Bowl with Basketweave Exterior - Pur. (super irid. and very desirable)
- 110 58. N Greek Key 8 Ruffled Bowl with Basketweave Exterior - Dk. Mari. (super multi-colored example; really nice)
- 90 59. N Wishbone ftd. Ruffled Bowl with Ruffles and Rings Exterior - Pur. (nice color and irid.)
- 460 60. 11" IMPERIAL HEAVY GRAPE CHOP PLATE - PUR. (ABSOLUTELY SUPER COLOR WITH GREAT BRIGHT IRID. - WOW!) - RESOLD - PINHEAD
- 375 61. IMPERIAL DIAMOND LACE 7 PC. WATER SET - PUR. (ABSOLUTELY SUPER BRIGHT COLOR AND IRID.)
- 200 62. Imperial Grape Water Carafe - Pur. (super color and irid.; another beaut!) *Small open bubble bridged over*
- 75 63. Imperial Grape Tumbler - Pur. (super example)
- 80 64. 10 3/4" Imperial Grape Lg. 8 Ruffled Master Berry Bowl - Pur. (nice color and irid.)
- 95 65. 9" Imperial Grape Low Ruffled Bowl - Pur. (super; has bright blue highlights)
- 75 66. 9 1/2" Imperial Embossed Scroll Lg. 8 Ruffled Master Berry Bowl - Pur. (outstanding color and irid.; has pinhead on base)
- 65 67. 7 3/4" Imperial Embossed Scroll Deep 8 Ruffled Master Berry Bowl with File Exterior - Pur. (super; super bright irid.; really nice color and irid.)
- 60 68. 10 1/2" Imperial Ripple Standard Swung Vase - Pur. (super bright color and irid.)
- 70 69. 8 1/4" Imperial Ripple Standard Swung Vase - Amber (scarce color; nice irid.)
- 350 70. IMPERIAL ROBIN 7 PC. WATER SET - DK. MARL. (VERY SCARCE SET WITH NICE DARK COLOR AND IRID.)
- 65 71. Imperial Poinsettia Milk Pitcher - Dk. Mari. (nice; nice)
- 15 72. Imperial Flute and Cane Stemmed Goblet - Mari. (very scarce; nice)
- 5 73. Imperial Flute and Cane Flared Stemmed Compote from Goblet - Marl. (very scarce shape)
- 40 74. Imperial 474 Stemmed Goblet - Mari.
- 35 75. IMPERIAL STAR AND FILE TUMBLER - DK. MARL. (SUPER COLOR AND IRID.; VERY NICE EXAMPLE)
- 50 76. Imperial Star and File 2 Handled Celery Vase - Marl. (very scarce shape)
- 375 77. Imperial Crab Claw 7 pc. Water Set - Mari. (very scarce set; nice color and perfect)
- 95 78. Imperial Rococco Vase - Mari. (scarce; perfect)
- 160 79. Imperial Grape 8 pc. Wine Set - Mari. (super color and irid.)
- 250 80. IMPERIAL HOBSTAR AND WAFFLE BLOCK I.G. HANDLED BASKET - MARL. (VERY RARE AND VERY DESIRABLE; NICE)
- 145 81. IMPERIAL OCTAGON FTD. VASE - MARL. (VERY SCARCE; NICE COLOR AND IRID.)

- 175 82. IMPERIAL OCTAGON STEMMED CORDIAL - DK. MARI. (EXTREMELY RARE ITEM IN THIS SIZE - A CUTIE!)
- 275 83. IMPERIAL STAR AND FILE STEMMED CORDIAL GLASS - MARI. (ANOTHER RARITY IN THIS SIZE; REALLY NICE)
- 210 84. Imperial Octagon 8 pc. Wine Set - Dk. Mari. (super set in a great color)
- 950 85. 4 3/4" TALL X 3 1/2" BASE IMPERIAL ZIPPER LOOP SMALL SIZE FINGER LAMP - DK. MARI. (SUPER RARE AND VERY DESIRABLE; HAS GREAT DARK COLOR)
- 375 86. 8" TALL X 4 3/4" BASE IMPERIAL ZIPPER LOOP STANDARD SIZE KEROSENE LAMP - DK. MARI. (SUPER COLOR AND IRID.; VERY NICE ITEM)
- 320 87. 12 3/4" TALL X 4 3/4" BASE X 8" FLARE IMPERIAL RIPPLE SWUNG FUNERAL VASE - DK. MARI. (VERY SCARCE AND VERY DESIRABLE; NICE COLOR WITH PINK AND BLUE HIGHLIGHTS)
- 10 88. Imperial Star Medallion Milk Pitcher - Dk. Mari. (super color)
- 15 89. Imperial Laurel Band Vase - Mari. (scarce)
- 110 90. IMPERIAL LAUREL BAND 7 PC. WATER SET - MARI. (RARE SET; TUMBLERS HAVE GREENISH TINT TO BASE - A REAL TOUGHIE) *Per Lead*
- 25 91. Imperial Robin Handled Mug - Dk. Mari. (scarce; nice)
- 310 92. SOWERBY DIVING DOLPHINS FTD. RUFFLED COMPOTE WITH EMBOSSED SCROLL INTERIOR - AMY. (RARE; IRID. REALLY NICE ON INSIDE; LIGHT IN MIDDLE) - *Per Lead*
- 115 93. Sowerby Daisy Block Row Boat - Dk. Mari. (very scarce; nice dark color)
- 75 94. Sowerby Covered Hen on the Nest - Mari. (scarce; nice)
- 125 95. UNUSUAL COVERED HEN ON THE NEST WITH TURNED HEAD - MARI. (VERY SCARCE ITEM IN A VERY DESIRABLE SIZE)
- 175 95A. AUSTRALIAN NESTING SWAN ^{KANGAROO} MULTIPLE RUFFLED INDIVIDUAL BERRY BOWL - PUR. (EXTREMELY RARE PATTERN TO BE FOUND IN THIS SIZE; NICE COLOR AND IRID.)
- 50 96. 9 1/2" Tall Fenton Butterfly and Berry Swung Vase - Blue (nice color and irid.)
- 25 97. 9" Tall Fenton Butterfly and Berry Swung Vase - Dk. Mari. (nice color and irid.)
- 95 98. 9" Tall Fenton Fine Rib Swung Vase - Lt. Mari. / Vaseline (scarce base color)
- 98A 14 - 16" Fenton Rustic Mid-size Swung Vase - Amy. (great color and irid.; nice item) *NO SHOW*
- 40 99. 6 1/4" Tall Fenton Boggy Bayou Squatty Vase - Mari.
- 235 100. FENTON KITTENS CUP AND SAUCER - DK. MARI. (VERY DESIRABLE WITH NICE DARK COLOR AND IRID.)
- 400 100A FENTON KITTENS 6 RUFFLED BOWL - BLUE (RARE AND DESIRABLE; EXCELLENT DETAIL AND IRID.)
- 150 101. FENTON KITTENS DEEP ROUND CEREAL BOWL - DK. MARI. (VERY SCARCE & DESIRABLE; NICE)
- 300 102. 2" TALL FENTON KITTENS CLOVERLEAF SHAPED SQUATTY TOOTHPICK HOLDER WITH 2 SETS OF KITTENS - DK. MARI. (VERY UNUSUAL; DARK COLOR WITH GREAT DETAIL)
- 15 103. Fenton Orange Tree Standard Flared Mug - Dk. Mari. (super color with great irid.)
- 85 104. FENTON ORANGE TREE STANDARD FLARED MUG - LT. MARI. / VASELINE (SUPER SCARCE COLOR WITH GREAT BASE GLASS)
- 250 105. FENTON ORANGE TREE HANDLED LOVING CUP - DK. MARI. (SUPER, SUPER DARK COLOR AND IRID.; WONDERFUL!)
- 105 106. 8 1/4" Fenton Orange Tree Ice Cream Shaped Bowl - White (super scarce with super irid.)
- 70 107. 8 3/4" Fenton Orange Tree 6 Ruffled Bowl - Blue (super color and irid.; nice)
- 45 108. 9" Fenton Orange Tree 8 Ruffled Bowl - Mari. (satiny finish; nice)
- 120 109. Fenton Horsehead Medallion ftd. Jack in the Pulpit Bowl - Mari. (scarce; nice color and detail)
- 450 110. 7 1/2" FENTON HORSEHEAD MEDALLION FLAT PLATE - DK., DK. MARI. (HAS TO BE THE BEST MARIGOLD EXAMPLE I'VE SEEN - PERIOD!) *RETURNED - CHECK.*
- 95 111. 6 1/2" Fenton Horsehead Medallion Deep Round Flared Bowl - Dk. Mari. (super example; great color and detail)
- 75 112. 6 3/4" Fenton Horsehead Medallion Low Ice Cream Shaped Bowl - Mari. (scarce shape; nice satiny finish)
- 80 113. 6 3/4" Fenton Lions Low Ice Cream Shaped Bowl - Mari. (scarce shape; has average irid. and great detail)
- 110 114. 7" Fenton Lions Low 6 Ruffled Bowl - Dk. Mari. (super satiny example with great color)
- 35 115. Fenton Sailboat Stemmed Wine Glass - Dk. Mari. (great color)

START OF SECOND SESSION

- 70 116. Fenton Pastel Swan - Pink (scarce; nice)
- 275 117. Fenton Pastel Swan - Celeste Blue (scarce; nice)
- 20 118. Fenton Wine and Roses Stemmed Goblet - Lt. Mari. (scarce pattern)
- 50 119. 5 1/4" Fenton Little Flowers Deep Round Sauce - Amy. (super irid.)
- 230 120. 6 1/2" FENTON LITTLE FLOWERS FLAT PLATE - POWDER BLUE / MARI. (EXTREMELY RARE COLOR FOR THIS ITEM; REAL NEAT BASE COLOR)
- 300 120A 9" FENTON CORAL FLAT PLATE - DK. MARI. (VERY RARE ITEM; AS NICE AS THEY COME; ONE POINT CHIPPED OFF)
- 65 121. FENTON HOLLY STEMMED RUFFLED COMPOTE - LT. AMY. (VERY SCARCE COLOR FOR THIS ITEM; NICE)
- 200 122. 9 3/4" FENTON HOLLY FLAT PLATE - MARI. (REALLY NICE SATINY EXAMPLE AND FLAT!)
- 75 123. 9" Fenton Dragon and Lotus 8 Ruffled Bowl - Blue (super example with great irid.)
- 35 124. 8 1/2 - 8 3/4" Fenton Dragon and Lotus 8 Ruffled Bowl - Dk. Mari. (super, super color and irid. - great item)
- 300 125. FENTON BLACKBERRY SPRAY 6 RUFFLED HAT - RED (HAS AN UNUSUAL TINT WITH BRIGHT COLOR AND IRID.)
- 60 125A FENTON BLACKBERRY SPRAY CRIMPED EDGE JACK IN THE PULPIT HAT - AMBER (EXCELLENT EXAMPLE WITH BRIGHT MULTI-COLORED IRID.)
- 475 126. FENTON 2 ROW OPEN EDGE RUFFLED HAT - RED (SUPER RED COLOR AND VERY NICE)

70127. Fenton Persian Medallion Lg. Ruffled 3 in 1 Stemmed Compote - Dk. Mari. (super color and irid.)
- 225127A 6" FENTON PERSIAN MEDALLION DEEP FLARED SAUCE WITH TIGHT CRIMPED EDGE - GREEN (ONLY ONE IN THIS SHAPE I'VE EVER SEEN - VERY DESIRABLE WITH GOLDISH HIGHLIGHTS)
45128. 8" Fenton Leaf Chain Ice Cream Shaped Bowl - Dk. Mari. (super color and great irid.)
70129. 9 1/4" Fenton Captive Rose 6 Ruffled Bowl - Amy. (very nice example)
950130. FENTON PANELED DANDELION 7 PC. TANKARD WATER SET - AMY. (SUPER SCARCE WITH EXCELLENT COLOR AND IRID.) *BRUISE 1 TUMBLER*
700131. FENTON PANELED DANDELION 7 PC. TANKARD WATER SET - BLUE (ANOTHER TOUGH SET - COMPLETE AND PERFECT) *FLAKE - 1 TUMBLER*
135132. 9" FENTON PLAID 8 RUFFLED BOWL - MARI. (VERY SCARCE PATTERN; NICE COLOR)
75133. Fenton Lotus and Poinsettia ftd. Ruffled Sauce - Blue (very nice irid.)
310134. Fenton Lotus and Poinsettia ftd. Ruffled Sauce - Aqua (a beaut for one of these - nice!)
275135. Fenton Butterfly and Berry 7 pc. Water Set - Mari. (nice satiny finish; nice set)
- 1600135A FENTON BUTTERFLY AND BERRY FTD. HATPIN HOLDER - DK. MARI. (EXTREMELY RARE ITEM WITH NICE DARK SATINY FINISH - A TOUGHIE!)
130136. 10 1/4" Fenton Little Flowers Lg. 6 Ruffled Bowl - Green (very satiny; nice)
120137. 10 3/4" Fenton Stag and Holly Lg. Bail ftd. Ice Cream Shaped Bowl - Mari. (super example; nice satiny finish - perfect) *small roughness one foot*
45138. Fenton Flowers ftd. Rose Bowl - Mari. (nice color - perfect feet)
- 120138A FENTON FLOWERS FTD. FLARED NUT BOWL - BLUE (VERY RARE SHAPE FOR THIS PATTERN; HAS SMALL FLAKE ON ONE TOE)
95139. 8 3/4" Fenton Peacock and Grape 8 Ruffled Bowl - Green (satiny finish with dark color)
- 275139A FENTON PEACOCK AND GRAPE SPATULA FTD. FLAT PLATE - DK. MARI. (VERY SCARCE WITH NICE NICE DARK SATINY FINISH)
450140. FENTON THISTLE FTD. OVAL BANANA BOAT - GREEN (ABSOLUTELY SUPER, SUPER EXAMPLE; GREAT)
200141. Fenton Thistle ftd. Oval Banana Boat - Dk. Mari. (another super example with great color)
225142. Fenton Apple Tree 7 pc. Bulbous Water Set - Mari. (scarce set)
145143. 8 1/4" FENTON PEACOCK AT THE URN ICE CREAM SHAPED BOWL - BLUE (SUPER IRID. AND HAS REALLY NICE DETAIL)
90144. 7 3/4" Fenton Peacock at the Urn Ice Cream Shaped Bowl - Dk. Mari. (super dark color and irid.; really nice!)
300145. N LEAF AND BEADS FTD. ROSE BOWL - AQUA OPAL. (VERY SCARCE; NICE EXAMPLE; IRID. LIGHT INSIDE)
90146. N Singing Bird Handled Mug - Blue (very scarce; nice)
50147. N Singing Bird Handled Mug - Dk. Mari. (super color and irid.)
110148. N Round Bushel Basket - Blue (super example; really nice irid.)
110149. N Eight sided Bushel Basket - Mari. (scarce; nice)
750150. N PEACOCKS PLATE WITH RIBBED EXTERIOR - PUR. (VERY SCARCE AND DESIRABLE; NICE BLUE - RED IRID.)
375151. N PEACOCKS PLATE WITH RIBBED EXTERIOR - DK. MARI. (ONE OF THE BETTER EXAMPLES - SUPER DARK COLOR)
550152. N PEACOCKS PLATE WITH RIBBED EXTERIOR - WHITE (ANOTHER SUPER EXAMPLE WITH GREAT IRID.)
600153. 8 3/4" N PEACOCKS STIPPLED RUFFLED BOWL WITH RIBBED EXTERIOR - COBALT BLUE (SUPER EXAMPLE WITH GREAT IRID. - VERY RARE!)
300154. N PEACOCKS BOWL WITH PIE CRUST EDGE AND RIBBED EXTERIOR - DK. MARI. (SUPER, SUPER EXAMPLE - A REAL BEAUTY)
1100155. N PEACOCK AT THE URN LG. ICE CREAM BOWL - ICE GREEN (RARE AND VERY DESIRABLE; SUPER IRID.)
- 2750155A N PEACOCK AT THE URN INDIVIDUAL ICE CREAM BOWL - AQUA OPAL. (EXTREMELY RARE AND VERY DESIRABLE; PERFECT WITH GREAT OPAL. AND IRID.; A TOUGH ITEM TO FIND)
950156. N PEACOCK AT THE URN LG. ICE CREAM BOWL - ICE BLUE (ANOTHER SUPER EXAMPLE; GREAT IRID.)
1150157. N PEACOCK AT THE URN LG. ICE CREAM BOWL - BLUE (NICE EXAMPLE OF A SCARCE COLOR; NICE)
400158. N PEACOCK AT THE URN LG. ICE CREAM BOWL - PUR. (ANOTHER NICE EXAMPLE WITH MULTI-COLORED IRID.)
375159. N PEACOCK AT THE URN ALL OVER STIPPLED LG. ICE CREAM BOWL - DK. MARI. (SUPER EXAMPLE WITH GREAT MULTI-COLORED IRID.)
2400160. N HEARTS AND FLOWERS PLATE WITH RIBBED EXTERIOR - ICE BLUE (RARE AND VERY DESIRABLE; GREAT ITEM WITH GOLD HIGHLIGHTS)
400161. N HEARTS AND FLOWERS BOWL WITH PIE CRUST EDGE AND RIBBED EXTERIOR - DK. MARI. (SUPER DARK IRID.; EDGE DIDN'T FILL IN)
425162. N HEARTS AND FLOWERS STEMMED RUFFLED COMPOTE WITH RIBBED EXTERIOR - ELEC. BLUE (SUPER IRID.; VERY SCARCE AND DESIRABLE)
165163. N Heart and Flowers Stemmed Ruffled Compote with Plain Exterior - White (nice and frosty; nice color and irid.)
200164. N Heart and Flowers Stemmed Ruffled Compote with Ribbed Exterior - Dk. Mari. (nice color and irid.; scarce item)
1600165. N PEACOCK AT THE FOUNTAIN STEMMED RUFFLED COMPOTE WITH PLAIN EXTERIOR - ICE BLUE (RARE AND VERY DESIRABLE; SUPER ITEM WITH DARK BASE GLASS)
175166. Fenton Ground Cherries 7 pc. Bulbous Enamelled Water Set - Blue (nice decoration; scarce set)
60167. N Wishbone ftd. Bowl with Ruffles and Rings Exterior - Mari.
110168. N Three Fruits ftd. Ruffled Bowl with Ribbed Exterior - Dk. Mari. (scarce; has great color and irid.)
210169. 11 1/2" N Diamond Point Swung Vase - Dk. Mari (super color and irid.)

- 950 170. N IVY TOWN PUMP - PUR. (SUPER, SUPER COLOR AND IRID.; HAS MANUF CHECK AT HANDLE)
- 300 171. N FINE CUT AND ROSES FTD. ROSE BOWL WITH NO COLLAR BASE - GREEN (RARE VARIATION; NICE COLOR AND PERFECT)
- 725 172. N THIN RIB MID-SIZE SWUNG VASE WITH GOLD TRIM - SAPPHIRE BLUE (SUPER RARE AND DESIRABLE; GREAT COLOR WITH ORIGINAL GOLD TRIM)
- 425 173. N Raspberry 7 pc. Water Set - Dk. Mari. (super color and irid.; really nice)
- 110 174. Half Pint Hazel Atlas E-Z Seal Small Canning Jar - Mari. (very unusual and different - neat!)
- 1700 175. CAMBRIDGE INVERTED STRAWBERRY SPITTOON - GREEN (RARE AND VERY DESIRABLE; PERFECT)
- 1000 176. PAIR CAMBRIDGE INVERTED STRAWBERRY CANDLESTICKS - GREEN (VERY RARE PAIR; SUPER COLOR; ONE PERFECT - ONE DAMAGED AT BASE)
- 130 177. 6" M'burg Blackberry Wreath 6 Ruffled Sauce - Amy. (radium and super!)
- 200 178. 7 1/2" M'burg Little Stars 6 Ruffled Bowl - Green (very scarce; has nice satiny finish)
- 100 179. M'burg Holly Sprig Handled Tri-Cornered Sauce Boat - Green (radium and getting really scarce)
- 900 180. M'BURG HOBNAIL SWIRL SPITTOON - DK. MARI. (SUPER DARK COLOR; VERY NICE AND DESIRABLE)
- 95 181. 8 3/4" M'burg Rays and Ribbons Ice Cream Shaped Bowl - Dk. Mari. (radium and very scarce; great color)
- 1100 182. 8" M'BURG TROUT AND FLY ICE CREAM SHAPED BOWL - GREEN (SUPER RADIUM AND SUPER DESIRABLE; WOW!)
- 400 182A 6" M'BURG PEACOCK INDIVIDUAL ICE CREAM BOWL - GREEN (RADIUM AND VERY RARE; HAS NO BEE - NO BEADING; SUPER IRID.)
- 130 182B 5 1/2" M'BURG PEACOCK INDIVIDUAL DEEP FLARED BERRY BOWL - MARI. (RARE IN THIS COLOR WITH NICE RADIUM FINISH; HAS NO BEE, NO BEADING)
- 425 183. 8 1/4" M'BURG TROUT AND FLY ICE CREAM SHAPED BOWL - AMY. (SATINY AND VERY DESIRABLE; NICE!)
- 700 184. 8 3/4" M'BURG TROUT AND FLY 8 RUFFLED BOWL - GREEN (SATINY AND VERY DESIRABLE; GREAT COLOR AND IRID.)
- 600 185. 8 3/4" M'BURG TROUT AND FLY BOWL WITH 3 IN 1 EDGE - GREEN (VERY SCARCE; NICE SATINY FINISH)
- 275 186. EUROPEAN BEADED HEARTS LG. STEMMED CAKE STAND - MARI. (EXTREMELY RARE - ONLY ONE I'VE SEEN)
- 110 187. Westmoreland Enameled Decorated Barber Bottle - Cranberry Flash (very scarce with porcelain top)
- 70 188. Westmoreland Enameled Decorated Barber Bottle - Grey Flash (very scarce with porcelain top)
- 100 189. Westmoreland Enameled Decorated Barber Bottle - Lt. Mari. (has metal top and very scarce)
- 625 190. DUGAN RIBBED INTERIOR / JEWELLED HEART EXTERIOR 2 SIDED SMALL SIZED HANDLED BASKET - DK. P. OPAL. (EXTREMELY RARE WITH FANTASTIC IRID. AND OPAL. - SUPER - SUPER!)
- 85 191. Dugan Question Mark Stemmed Compote with Tight Crimped Edge - Dk. P. Opal. (great color, opal. and irid.)
- 85 192. 12 1/2" Tall Spiral Swung Vase - Dk. P. Opal. (super color and opal.)
- 190 193. 10 1/2" Dugan Petal and Fan Lg. Ruffled Berry Bowl and Small One with Jewelled Heart Exterior - P. Opal. (selling 2 items for one money)
- 275 194. DUGAN HONEYCOMB ROSE BOWL - DK. P. OPAL. (SUPER SCARCE; GREAT COLOR AND IRID.)
- 300 195. 10 3/4" DUGAN FOUR FLOWERS CHOP PLATE - P. OPAL. (RARE AND VERY DESIRABLE; NICE IRID.)
- 130 196. 9 1/4" Dugan Round Up Low Ruffled Bowl / Plate - P. Opal. (opal. on edge with great irid.)
- 325 197. 8 3/4" Dugan Round Up Low Ruffled Bowl / Plate - Blue (very scarce color; nice satiny finish)
- 250 198. 9 1/2" DUGAN FANCIFUL FLARED PLATE - WHITE (SUPER IRID. WITH GREAT FROSTY FINISH)
- 136 199. 6 3/4" DUGAN PERSIAN GARDEN PLATE WITH POOL OF PEARLS EXTERIOR - WHITE (SUPER COLOR WITH GREAT IRID.)
- 220 200. DUGAN BUTTERFLY AND TULIP DEEP ROUND FTD. BOWL WITH INVERTED FAN AND FEATHER EXTERIOR - MARI. (VERY SCARCE AND DESIRABLE; NICE)
- 525 200A 10 1/2 - 11" DUGAN VICTORIAN LG. 6 RUFFLED BOWL - PUR. (RARE AND DESIRABLE; ONE OF THE MORE ATTRACTIVE EXAMPLES - NICE!)
- 95 201. 7" Dugan Grapevine Lattice Flat Plate - Mari. (very scarce item with nice satiny finish)
- 40 202. Dugan Basketweave Miniature Handled Flower Basket - Mari.
- 50 203. Dugan Soda Gold Miniature Handled Flower Basket - Mari.
- 425 204. DUGAN HANDLED BEADED BASKET - AQUA (EXTREMELY RARE COLOR FOR THIS ITEM - SUPER!)
- 210 205. 7 3/4" DUGAN SIX PETALS 6 RUFFLED CRIMPED EDGE BOWL - PUR. (SUPER, SUPER COLOR AND IRID. - REALLY NICE!)
- 90 206. Dugan Leaf Rays One Handled Nappy - Pur. (great color and irid.)
- 30 207. Signed Heisey Wide Paneled Ind. Salt Dip - Lt. Mari. (very scarce item)
- 75 208. Indian Beaded Necklace with Bird - Dark (very nice and unusual)
- 55 209. Indian Beaded Necklace with Fleur de Lis - Dark (very nice and unusual)
- 675 210. SLINKY SNAKE WITH CARNIVAL GLASS HEAD - DARK (EXTREMELY RARE - ONE OF ONLY A COUPLE I'VE SEEN AND THIS ONE IS COMPLETE)

AUCTION RESULTS

For the results of any Burns Auction Service auction, send \$2.00 and a SASE to:

Valerie Carlsen
202 Eleanor Street
Horseheads, NY 14845